

Hearing Aids at Ohio Eye Associates

Our patients know and trust us for our care and professionalism when it comes to their vision care. We believe vision is something that should never be taken for granted. We believe that your hearing should never be taken for granted either. Until now, we could help our patients enjoy the *sights of life*, but couldn't help them with the *sounds of life*.

Ohio Eye Associates has partnered with Beltone for your hearing needs. You can now have your hearing checked and hearing instruments serviced right at our facility. Beltone is the most trusted name in hearing care in adults over 50 and they share our philosophy of providing only the highest standards in patient care and quality of service. Together, we can help our patients with both the *sights and sounds* they may be missing, and we think that's pretty incredible.

Who is Beltone

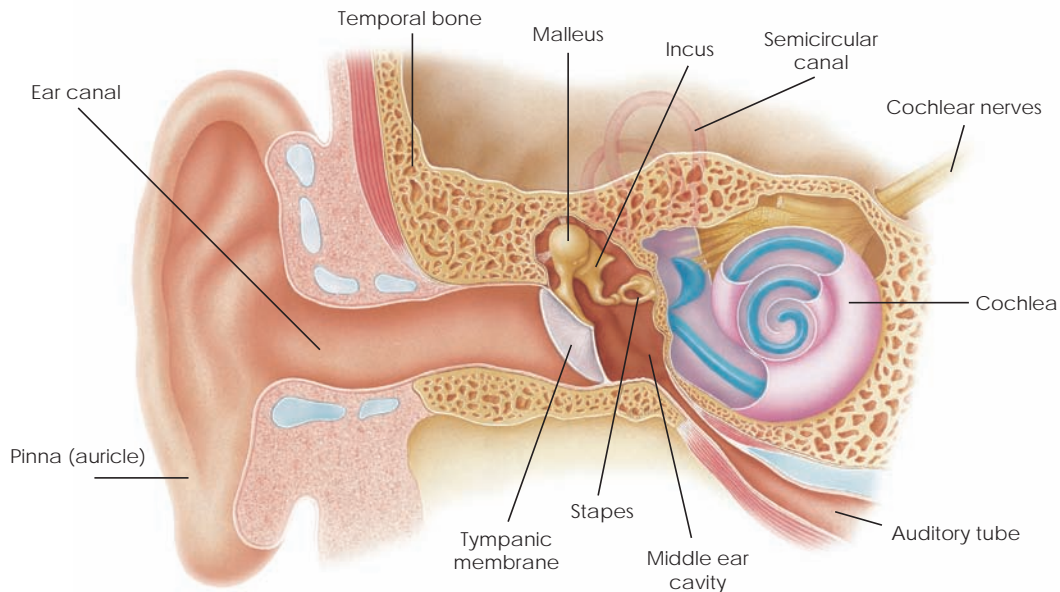
Beltone is a global leader in hearing health care. Celebrating 70 years in 2010, Beltone has dedicated itself to helping people enjoy more rewarding lives through better hearing. Purchasing a hearing instrument is an important investment. Choosing where you make that purchase is a critical decision.

Beltone has more than 1500 locations and service centers nationwide, giving you the confidence that no matter where you are, you will receive follow-up care for as long as you own your Beltone hearing instruments.



The Anatomy of the Ear

The ear is composed of four general areas, each working together to convert sound waves into electrical signals which the brain translates into sound.



10 Warning Signs of Hearing Loss

If you experience these warning signs repeatedly or in combination, they may indicate a hearing loss.

1. People seem to **mumble** more frequently.
2. You experience **ringing** in your ears.
3. You often ask people to **repeat** themselves.
4. Your family complains that you play the **radio or TV** too loudly.
5. You no longer hear normal **household sounds**, such as the dripping of a faucet or the ringing of a doorbell.
6. You have difficulty understanding a conversation when in a **large group or crowd**.
7. You have trouble understanding all the words in a **conversation**.
8. You find **telephone** conversation increasingly difficult.
9. You have **trouble** hearing when your back is turned to the speaker.
10. You have been told you **speak too loudly**.

Our Services

Comprehensive Hearing Tests



Beltone hearing screening uses computerized audiometric testing to measure your hearing at different sound levels and your understanding of speech in multiple listening environments. This simple, painless procedure takes only 30-45 minutes.

Video Ear Exams

This test uses a tiny camera to examine the ear canal and eardrum to identify possible blockages

that may be causing hearing loss. You will be able to observe the process on a computer screen.



Life Time Care

All Beltone hearing instruments come with the exclusive BelCare™ commitment – one of the most comprehensive aftercare programs available. From your very first hearing screening through all the years you own your Beltone hearing instruments, BelCare™ assures you a lifetime of attention at any one of Beltone’s participating hearing care centers nationwide.

Belcare™ benefits include:

- Hearing Evaluations
- Minimum Loss to Fit
- Quality Control Review
- Follow-up Schedule
- 30-Day Refund Policy
- Warranty and Lost, Stolen and Damage Coverage
- Two-Year Hearing Loss Change Protection
- 1-800-Beltone Patient Access



The Office Visit

At Beltone, you can expect an experience that is trustworthy, professional and caring.



Assessment

Our exclusive Personalized Hearing Health Assessment (PHHA) puts you in control of deciding the best solution of your individual hearing needs.

Evaluation

Your Beltone Professional will guide you through a thorough evaluation, including a complete case history, a hearing screening, a video ear exam and a word discrimination test.

Explanation of Results

Following the testing, your Beltone Professional will discuss your audiogram results with you.

Demonstration

Using simulated everyday sounds, you'll be able to "test drive" the hearing instruments before you buy them.

Fitting and Delivery

Using your audiogram results, you'll be fit with instruments specific to your loss using our proprietary fitting software.

